

# ST. MARY CATHOLIC CHURCH

82 East William Street, Delaware, OH 43015

Website: [www.delawarestmary.org](http://www.delawarestmary.org)

ph: 740-363-4641 • fax: 740-363-9915

email: [stmary@delawarestmary.org](mailto:stmary@delawarestmary.org)

## PARISH CLERGY

740-363-4641

Reverend Sylvester Onyeachonam, Pastor ..... ext. 104

Reverend Brett Garland, Parochial Vicar, Adult Faith Formation ..... ext. 113

Reverend Mr. Todd Tucky, Deacon, Director of Liturgy..... ext. 118

Reverend Mr. Felix Azzola, Retired Deacon..... ext. 111

## PARISH OFFICE STAFF

740-363-4641

Mrs. Kris Jesse, Business Manager ..... ext. 103

Mrs. Cathy Brackenridge, Finance Manager ..... ext. 102

Mrs. Janet Conroy, Cemetery Coordinator, Safe Environment ..... ext. 101

Mr. John Blasko, Director of Music ..... ext. 120

Mrs. Amy Lenocker, IT Administrator ..... ext. 108

Mr. Andy Mackey, Parish Engagement Specialist..... ext. 119

Mrs. Andres Bell, Parish Office Secretary ..... ext. 114

Mrs. Emily Wu, Religious Education Coordinator..... ext. 107

Mrs. Marissa Everhart, Youth Minister..... ext. 116

Mrs. Carol Kuhns, Coordinator of Homebound, Sick and Aging ..... ext. 121

Miss Wendy Piper, Liturgy Coordinator ..... ext. 109

Mrs. Cathy Bennett, Volunteer Coordinator ..... ext. 115

## SCHOOL ADMINISTRATION STAFF

740-362-8961

Mrs. Gina Stull, School Principal

Mrs. Sophia Koeritzer, School Secretary ..... ext. 201

Mr. Mike Honaker, Building Superintendent..... ext. 203

Mrs. Jackie Walker, Athletic Director ..... [athleticdirector@delawarestmary.org](mailto:athleticdirector@delawarestmary.org)

Parish Office visits are by appointment only until further notice.

*In an emergency for Anointing of the Sick and visits to the sick or hospitalized, please call the parish office day or night for one of our priests.*

## CURRENT SCHEDULE

<b>Saturday</b>	9:00 a.m.	FIRST SATURDAY OF THE MONTH (open to the public, no sign-up, livestreamed)
	3:30-4:10 p.m.	Confessions in School Gym, no sign-up
	4:30 p.m.	Open to public, sign-up on our website (no livestream)
<b>Sunday</b>	9:00 a.m.	Open to public, sign up on our website (livestreamed)
	11:30 a.m.	Open to public, sign-up on our website (no livestream)
	2:00 p.m.	LAST SUNDAY OF THE MONTH Spanish Mass (open to the public, no sign-up, no livestream)
<b>Monday</b>	9:00 a.m.	Open to public, sign-up on our website (no livestream)
<b>Tuesday</b>	9:00 a.m.	Livestream Only
<b>Wednesday</b>	9:00 a.m.	Livestream Only
<b>Thursday</b>	9:00 a.m.	Livestream Only
<b>Friday</b>	9:00 a.m.	Open to public, sign-up on our website (livestream)

*Livestreams and recordings are available at  
[stmarylivestream.com](http://stmarylivestream.com) OR [facebook.com/stmarydelaware](https://facebook.com/stmarydelaware)*



## ST. MARY MISSION STATEMENT

*Under the patronage of Our Blessed Mother, and rooted in the Roman Catholic faith since 1835, St. Mary Delaware is a vital and vibrant community that engages the living God in worship and prayer, and in Word and Sacrament. Led by the Holy Spirit, and imploring the intercession of St. Mary, we desire to imitate her role of being the Christ bearer, and bear witness to her Son's redeeming love that has been poured upon us in Baptism, and sustained by the practices and teachings of the Church.*

## WELCOME TO ST. MARY PARISH

For the safety of all, please take this bulletin home with you at the conclusion of Mass and DO NOT return it to the bulletin stands or leave it in the pew. Thank you.

## Twentieth Sunday in Ordinary Time

August 16, 2020



### PASTOR'S CORNER

#### O Woman, Great is Your Faith

My dear brothers and sisters, in the readings of today, one underlying factor about true children of God is their unreserved faith in God. Even though God initiated his salvation plan through the chosen people, the Jews, God's mercy and grace extends to all who believe in Him.

Historically, when the Israelites returned from Exile, they found that many foreigners and neighboring people had moved into the land which once they had called their own. In the first reading, Isaiah the prophet of the Exile presents a bold vision where God will actually bring to the 'holy mountain' foreigners who have attached themselves to the Lord, making of the Temple a house of prayer for all the peoples (Isa 56:1, 6-7) (cf. Mark 11:17). The privilege of worshipping God is so central to Israel's identity that it is hard to think of a stronger expression of inclusivity than this.

In the second reading, St Paul affirms the fulfilment of this prophecy and at the same time emphasizes the mercy and grace of God that made this possible. However, in the Gospel, the Lord Jesus talks about the exclusivity of the Jewish people bringing out the best of faith in the Canaanite woman. Jesus first ignores the woman completely, despite the persistence and force of her plea, as she turns to the Jewish Messiah ('Son of David') for help. The disciples' urgent recommendation, 'send her away,' seems to imply 'Get rid of her by granting her what she wants,' but Jesus coldly insists that his mission is restricted to 'the lost sheep of the house of Israel' (cf. 10:5-6). When, in one of the most moving gestures in all the Gospels, she comes and kneels before him and simply begs, 'Lord, help me,' She receives is a third rebuff in the form of the humiliating image about not throwing the children's food to dogs. But here, at last, is her chance. With superb wit, she takes up Jesus' image and turns it around in faith. Certainly, food prepared for children is not intended for domestic animals. But children eat untidily and house dogs under the table seize any scraps that fall. Having brought out the best of faith from her, Jesus gives in, agreeing to her request and praising the greatness of her faith. The seeming snub from Jesus is to make sure that she merits this request by faith. Faith is the only thing that makes us worthy of God's intervention.

Many readers of the Gospel will undoubtedly be troubled by the apparent coldness that Jesus initially displays towards this desperate woman. However, by depicting Him acting in such a way, the narrative first intensifies the sense of the barrier between Jews and Gentiles. It only highlights the significance of what is happening when, as a result of the woman's faith, the barrier comes crashing down. Apparently the woman didn't get angry or frustrated. She didn't give up hope, but kept right in there. In the end, we can say that she won. In fact, Jesus ends up by paying her a great compliment about her great faith. And more importantly she obtains what she originally had asked for, the cure of her daughter.

I will admit it is easy to say that this should be an example for us. I do believe that our prayer life, especially when we go to God with our needs and petitions can be a great test of our faith. The reason I say this is because it seems to happen so often that our prayers, Yes, our well intentioned prayers seem to go unanswered. I'm referring to the times when we pray for the conversion of loved ones who have fallen away from the Church, who no longer practice their religion, who no longer believe. Why aren't those prayers answered? Luke 18:1 says, "we ought always to pray and never lose heart." Perseverance in prayer and unrelenting faith finds favor in God's sight.

Stay safe and God bless you.

Fr Sylvester O

*[Handwritten signature]*  
Fr. Sylvester O.

## ST. MARY MASS INTENTIONS

Saturday	Aug. 15	9 am	<i>The Assumption of the Blessed Virgin Mary</i> Jeff Grossman
		4:30 pm	Kathleen Wilhelm +
Sunday	Aug. 16	9 am	Cleo Opal Bullard +
		11:30 am	Lucille Reinhard +
Monday	Aug. 17	9 am	St. Mary Parishioners
Tuesday	Aug. 18	9 am	Jeff Beitel +
Wednesday	Aug. 19	9 am	Bob & Boots Reed +
Thursday	Aug. 20	9 am	Bob Palmer +
Friday	Aug. 21	9 am	Bill & Rita Sagula +
Saturday	Aug. 22	4:30 pm	Kim Hammond + and his family
Sunday	Aug. 23	9 am	Alan Reiner +
		11:30 am	Chris Leyva +

**\*First Saturday Mass is at 9 am monthly & Spanish Mass is the last Sunday of the month at 2 pm.\***

### Mass Participation Sign-Up

For safety reasons, it is necessary to limit the total number of people attending Mass at one time. Visit our website Bulletin page for a Signup Genius to reserve your Mass seating for Masses requiring sign-up. The Mass seating assignment sheets for Friday through Monday are printed and posted in the church by noon on Thursday. If you signup after that time, your name won't be on the printed sheet. Please signup for your seats by Thursday morning to ensure you get your seat of choice.

### Parking Lot Communion Distribution

At 10:30 am Father Sylvester and Deacon Tucky will offer the opportunity for the faithful to receive Communion in the St. Mary parking lot. Stay in your car, and they will bring Communion to you.

### Mass Intention Requests

Mass can be offered for anyone for any special reason or intention whether they are living or deceased, Please see our website for more information and the request form...<https://www.delawarestmary.org/forms> that can be mailed to the parish office. Please note, the Mass intention calendar is full until mid-November.

### Prayer Chain Requests

Confidentiality is assured. Leave a message at 740-363-4641, ext.105 or email [prayer@delawarestmary.org](mailto:prayer@delawarestmary.org).

## MASS MUSIC

Since we will not have song books available for use in church, please  
download the PDF of the songs found at [stmarymusic.com](http://stmarymusic.com)

August 15 - The Assumption of Mary		August 16	
Entrance Song:	Hail Holy Queen	Entrance Song:	Sing O Sing
Preparation of the Gifts:	Hail Mary Gentle Woman	Preparation of the Gifts:	Prayer of St. Francis
Communion & Sending:	Luke 1 : Magnificat/Immaculate Mary	Communion & Sending:	The Cry of the Poor

August 23	
Entrance Song:	Hallelujah Is Our Song
Preparation of the Gifts:	Let Us Break Bread Together
Communion & Sending:	I Have Loved You



## PARISH INFORMATION

Dispensation has been given to the Catholic faithful who reside in the Diocese of Columbus and all other Catholics currently in its territories from the obligation of attending Sunday Mass until September 13, 2020. Anyone in a category of high risk is not obligated to come to Mass. Also, If you are experiencing any COVID-19 symptoms, even if you are sure it is allergies, please stay home until completely well.

### Mass Attendance Protocols

- Maintain visible social distancing between families of six feet before, during and after Mass.
- Those attending Mass, are required to wear a face covering, unless under the age of two.
- Please bring your own mask and we encourage you to wear gloves if possible
- The reception of Holy Communion will continue to be in the hand only.
- Sanitize your hands upon entering the church. Please bring your own sanitizer, as our supply is limited.

### Mass Precautions

- Sanitation of the pews will take place after every Mass.
- Every other pew will be roped off to assist with social distancing.
- No missals will be used during Mass. Download music on your phone in advance.
- No sign of the peace.
- No distribution of the precious blood. Hosts and sacred vessels will be on the altar for consecration
- No altar servers.
- The Holy Water fonts will remain empty.
- There will be no offertory procession.
- The cry rooms will be closed due to the confining space.

### Parish Office Guidelines

- The parish staff will meet with parishioners and vendors by appointment only until further notice.
- Per Diocesan Guidelines, no children are permitted in the parish office until further notice.
- Masks are mandated for parish staff and all those with appointments.
- We will not be hosting any large events and meeting spaces will remain closed until further notice.

### Bulletin & Website Submissions

Please submit all announcements to [bulletineditor@delawarestmary.org](mailto:bulletineditor@delawarestmary.org) a minimum of 10 days prior to publication date. Website submissions can be sent to [webmaster@delawarestmary.org](mailto:webmaster@delawarestmary.org).

### Parish Registration

We encourage new parishioners to visit [delawarestmary.org/forms](http://delawarestmary.org/forms) for a registration form. Please email completed form with copies of sacrament certificates to [abell@delawarestmary.org](mailto:abell@delawarestmary.org).

### Infant Baptisms

Please complete a request form at [delawarestmary.org/forms](http://delawarestmary.org/forms) and email to [abell@delawarestmary.org](mailto:abell@delawarestmary.org).

### Marriage

For inquiries about marriage, please call the parish office or email [stmary@delawarestmary.org](mailto:stmary@delawarestmary.org)

### Financial Stewardship

Offertory boxes are in the church. For online giving please visit [www.delawarestmary.org/stewardship](http://www.delawarestmary.org/stewardship)

### Our Lady of Lourdes Statue Donations

Donations are being accepted toward the purchase of a new Our Lady of Lourdes statue for our church. The statue will be in the church after the grotto is completed and the current Our Lady of Grace statue is moved. Donations can be made by check (clearly marked for statue) or can be made through Online Giving (Statue Fund). The purchase will be after total funding has been received.

### Bulletins Are BACK

We are happy to start distributing printed bulletins again and hope you find all the information useful during this time. Please, as a reminder, for the safety of all, kindly take it home with you after Mass and DO NOT return it to the bulletin stands or leave it in the pew. Bulletins will also be available on the parish office porch to pick up during parking lot Communion or any other time during the weekend.

### **Bishop's Annual Appeal**

"Living the Joy of the Gospel," the theme of the Bishop's Annual Appeal, inspires us, as people of faith, to share joyfully the Good News of Christ to those who most need to feel His love. Works of kindness and assistance, sometimes in the smallest way, can bring about a profound change in a person's life. Through the Bishop's Annual Appeal, we have an opportunity to bring about a positive change in the lives of many of God's people. Through your generosity, you are supporting the various ministries and programs that are vital in spreading His love. Our parish has been asked to raise \$174,160.14. We can accomplish this if, after prayerful consideration, everyone gives what they can. Any amount raised over our goal will be returned to our parish to be used for our particular needs.

### **St. Mary PSR Registration**

Register for 2020-2021 PSR is on our website - [delawarestmary.org/psrregistration](http://delawarestmary.org/psrregistration). The Parish School of Religion (PSR) mission is to assist parents in the religious education and spiritual formation of their children grades (K-8th grade) who attend non-parochial schools. We are excited to transmit the message of Jesus Christ to the families who participate in our program!

### **RCIA (Rite of Christian Initiation of Adults) 2020-2021 Registration**

RCIA is the process by which individuals join the Catholic Church. A new season begins each September, members are brought into the Church at the Easter Vigil, and the sessions culminate with Pentecost. Please visit our website at [delawarestmary.org/forms](http://delawarestmary.org/forms) to complete a registration form and email to Father Garland at [frgarland@delawarestmary.org](mailto:frgarland@delawarestmary.org).

### **Family Prayer Time - Rosary and Divine Mercy Chaplet**

Starting in September, Fr. Sylvester asks individuals and families to either provide your own video or audio recording of your family at home praying or signup to be recorded praying the Rosary or Divine Mercy Chaplet in the church. The recording will be featured online at 3 pm and 7 pm Monday - Friday. Signup online at [stmaryprayertime.com](http://stmaryprayertime.com) or call the parish office for assistance. Please join us to pray together as family with our parish community.

### **The Knights of Columbus Farmers Market**

The Knights of Columbus Farmers Market begins is every Sunday through the summer across the street at the Knights of Columbus Hall. The Annual Farmers Market is in the 13th season under Chairman, Jim Huffman. Last year they raised \$1300 that was donated to People In Need, plus several hundred pounds of produce. This year the need is even greater, come check it out!

### **Fall Sports Athletics**

Fall sports registration is now open and teams are organizing for all St. Mary or PSR students fourth through eighth grade. Until games/ matches/ races are permitted, no registration fees are due until the sport officially opens. Ohio and Columbus Diocese COVID protection protocols will be strictly enforced. A head coach and assistant coach for the fifth and sixth grade volleyball team is still needed. Please contact Jackie Walker for more information at [athleticdirector@delawarestmary.org](mailto:athleticdirector@delawarestmary.org).

**Golf:** <https://go.teamsnap.com/forms/238831>

**Cross Country:** <https://go.teamsnap.com/forms/238833>

**Volleyball:** <https://go.teamsnap.com/forms/238835>

### **Walking with Purpose (WWP) Bible study - Opening Your Heart**

Would you like to see how the Scriptures apply to your everyday life, but don't have much Scripture knowledge? If so, we invite you to join us! WWP Bible studies help us link our everyday challenges with solutions given to us through the teachings of Christ and the Catholic Church. This 16-week Bible study is open to all women ages 18 and up, Catholic, non-Catholic, practicing or non-practicing. Opening Your Heart is the foundational study for all other WWP Bible studies. If you were looking to join our study, this is the place to start! Registration forms will be available on the Parish website or by emailing one of the coordinators below. Books can be purchased from the Walking with Purpose website shop.

Karen Steffan, WWP Operational Coordinator, 740-739-1489 or [plebe13@aol.com](mailto:plebe13@aol.com)

Erin Maynard, WWP Pastoral Coordinator, [erinmaynard73@yahoo.com](mailto:erinmaynard73@yahoo.com)



## An Update from The Saint Vincent de Paul Society



Like every family and institution in our society, the Saint Vincent de Paul Society has been impacted by the current health crisis. Our primary mission of providing help to those in need has become even more critical. Ever-changing conditions have dictated that we rethink our established methods and modify existing programs, yet maintaining the highest level of service we can provide.

### The following changes and adjustments have been made:

- Our Semi-annual Clothing Drives have been indefinitely postponed. **Please note: the parish office is NOT able to accept or hold goods for these events.** We will set a next collection date when conditions allow.
- The monthly SVdP exit collections at Sunday Mass have been suspended. To donate, please use the envelope in your set, online donations, or direct mail to SVdP, C/O the parish office.
- We are currently not servicing the SVdP / PIN donation cabinet in the church. If you wish to donate to PIN, you can do so at their Johnson Drive Center.
- We have transitioned to using virtual meetings to conduct Society business.
- Our practice of visiting parishioners who are shut-ins or nursing home residents on their birthdays has been curtailed. We have attempted to fill that void by sending birthday greeting cards to those folks.
- We have modified our method of determining and administering aid to those in need.
  - Our Needs Line remains open. Those requesting help can reach us at **(740) 417- 3410**.
  - Our normal in person intake interview process has been suspended. We now gather all information through phone or online communication with the neighbor in need, landlords, utility companies, and other service providers.

Amazingly, the SVdP Society has been blessed with the continued strong support of our parish family, in spite of these difficult times. During the pandemic period, parishioners have extended **\$37,148 in financial support**. As of August 10, this has sustained **\$33,636** in assistance to families in extreme financial distress.

### Summarizing this assistance:

There were **103 requests for aid** that were met through the SVdP Needs Line. **Assistance rendered** impacted **220 members of those households**. That aid was allocated by percentage to the following categories:

Rent/Mortgage	Food	Utilities	Auto repair & fuel	Sustained local support*	Men's Shelter	Misc.**
37%	10%	16%	9%	21%	3%	4%

\* (Aid rendered in partnership with local agencies sharing our mission.)

\*\* (Includes medical costs, home repairs, and transition costs supporting a returning incarcerated citizen.)

**As always, may God bless you for your generous support that not only provides help to those most in need of it, but sets a standard of Christian compassion that is respected in our community.**

Efforts continue to establish the **St. Vincent DePaul Men's Shelter of Delaware County**. To accomplish this, several of our St. Mary Conference members are teaming with St. John Neumann Conference members, other Delaware religious leaders, and social service providers. **The group has made significant progress by:**

- Meeting incorporation requirements
- Formalizing a business plan
- Applying for grants
- Establishing fundraising plans
- Searching for potential sites
- Establishing a website

Liz Curtis of St. Mary is acting as chairperson for the effort. An interview with Liz regarding the shelter was recently published in *The Delaware Gazette*. She has also done an online presentation which will soon be on the parish website. For more information or to donate to the Men's Shelter visit, [www.mensshelterdelco.org/join](http://www.mensshelterdelco.org/join).

### National SVdP Friends of the Poor Walk

The walk will be held virtually this September. Proceeds raised by each team remain in the home parish to assist the needy. To support the **St. Mary's Saints** team, visit <https://www.fopwalk.org/teamlisting/teamdetail/?teamid=2593>

# Join Us to Celebrate

Reverend Sylvester Onyeachonam's  
20th Anniversary of his Ordination to the Priesthood

&

Reverend Brett Garland's  
Arrival as St. Mary's New Parochial Vicar

**\*NEW DATE \***

*Sunday, August 30, 2020*

*4 – 5 pm*

St. Mary Catholic Church

82 East William St.

Delaware, Ohio 43015

**Stay in your car to enter the one-way route  
from SELBY STADIUM to the Parish parking lot  
Decorate your car, say hello, smile, wave  
and/or bring a card! For your safety,  
please no walking in the parking lot or parade route.**

Watch online at [stmarylivestream.com](http://stmarylivestream.com)

Questions? Contact Andres Bell at 740-363-4641 ext. 114



## Weekly Scripture

### Sunday, August 16

*Twentieth Sunday  
in Ordinary Time*

Is 56: 1, 6-7

Ps 67:2-3, 5, 6, 8

Rom 11:13-15, 29-32

Mt 15:21-28

### Monday, August 17

*Weekday*

Ez 24:15-24

Dt 32:18-19, 20, 21

Mt 19:16-22

### Tuesday, August 18

*Weekday*

Ez 28:1-10

Dt 32:26-27ab, 27cd-28,  
30, 35cd-36ab

Mt 19:23-30

### Wednesday, August 19

*Weekday*

Ez 34:1-11

Ps 23:1-3a, 3b-4, 5, 6

Mt 20:1-16

### Thursday, August 20

*Memorial of Saint Bernard,  
Abbot & Doctor of the Church*

Ez 36:23-28

Ps 51:12-13, 14-15, 18-19

Mt 22:1-14

### Friday, August 21

*Memorial of Saint Pius X, Pope*

Ez 37:1-14

Ps 107:2-3, 4-5, 6-7, 8-9

Mt 22:34-40

### Saturday, August 22

*Memorial of The Queenship of  
the Blessed Virgin Mary*

Ez 43:1-7ab

Ps 85:9ab and 10, 11-12, 13-14

Mt 23:1-12

Access Daily Readings from the *New American Bible, Revised Edition (NABRE)* online at <https://bible.usccb.org>

## Salvation Overflows for the Benefit of All

### Reflection on Matthew 15:21-28

Today we move ahead in our reading of Matthew's Gospel. Last week we read about Jesus walking on the water and the disciples' confession of faith that Jesus is the Son of God. If we were reading Matthew's entire Gospel, we would have read about Jesus' debate with the Pharisees about Jewish purity laws. Jesus argues that it is not what goes into us that makes us unclean; he is referring to the strict Jewish dietary rules. Instead our words and our actions—what comes out of us—make us unclean because they emerge from a heart that is unclean.

Knowing about Jesus' debate with the Pharisees helps us to understand today's Gospel. In fact the story heightens the surprise and shock we feel as we hear Jesus' exchange with the Canaanite woman. The woman, who is not Jewish, approaches Jesus, requesting that he heal her demon-possessed daughter. At first Jesus ignores her; he says nothing. The disciples ask Jesus to send her away, and Jesus agrees, remarking that he was sent to minister to the Jews alone.

The woman persists, paying homage to Jesus, and yet Jesus denies her request again. He even insults her, using a Jewish word of derision for Gentiles, "dog." But the woman cleverly turns Jesus' insult into an affirmation of faith. Only then does Jesus grant her request and heal her daughter. Jesus' unresponsiveness to this woman may strike us as uncharacteristic or shocking. Yet in Matthew's Gospel, Jesus' ministry is directed primarily to the people of Israel. At only a very few points, such as the one found in today's Gospel, do we find Jesus anticipating the later Christian ministry to the rest of the world.

Behind Matthew's text we can hear this early Christian community's struggle to understand how God's selection of Israel is consistent with two events: Israel's rejection of Jesus and the Gentiles' acceptance of Jesus. Just as Jesus was surprised by the faith expressed by the Canaanite woman, so too the first Christians were surprised that the Gentiles would receive the salvation God offered through Christ. In today's second reading from Paul's letter to the Romans, we hear the apostle Paul considering this same concern. The faith that the Canaanite woman expresses is an affirmation of and confidence in God's abundant mercy. Yes, salvation comes through Israel, but it overflows for the benefit of all.

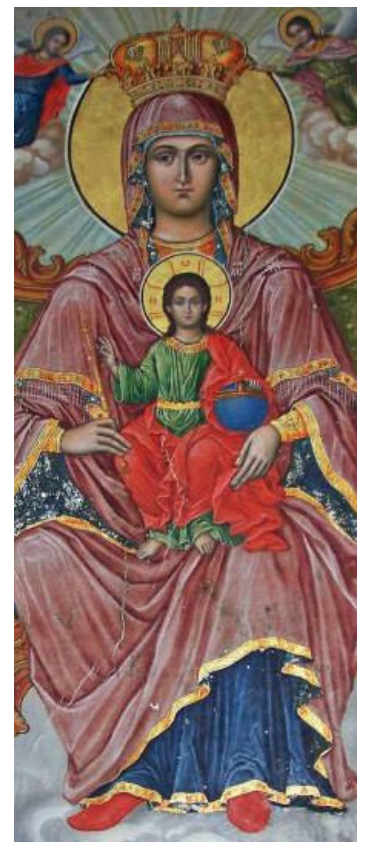
Twentieth Sunday in Ordinary Time, Cycle A. Loyola Press: A Jesuit Ministry, Chicago-Detroit Province of the Society of Jesus, 2020, <https://www.loyolapress.com/catholic-resources/liturgical-year/sunday-connection/20th-sunday-in-ordinary-time-a-sunday-connection/>

## The Queenship of Mary

### August 22

Pope Pius XII established this feast in 1954, but Mary's queenship has roots in Scripture. At the Annunciation, Gabriel announced that Mary's Son would receive the throne of David and rule forever. At the Visitation, Elizabeth calls Mary "mother of my Lord." As in all the mysteries of Mary's life, she is closely associated with Jesus: Her queenship is a share in Jesus' kingship. We can also recall that in the Old Testament the mother of the king has great influence in court. In the fourth century Saint Ephrem called Mary "Lady" and "Queen." Later Church fathers and doctors continued to use the title. Hymns of the 11<sup>th</sup> to 13<sup>th</sup> centuries address Mary as queen: "Hail, Holy Queen," "Hail, Queen of Heaven," "Queen of Heaven." The Dominican rosary and the Franciscan crown as well as numerous invocations in Mary's litany celebrate her queenship. The feast is a logical follow-up to the Assumption, and is now celebrated on the octave day of that feast. In his 1954 encyclical *To the Queen of Heaven*, Pius XII points out that Mary deserves the title because she is Mother of God, because she is closely associated as the New Eve with Jesus' redemptive work, because of her preeminent perfection, and because of her intercessory power.

Queenship of Mary. Franciscan Media, 2020.  
<https://www.franciscanmedia.org/queenship-of-mary/>







# Snyder-Rodman Funeral Center

740-362-1611

101 Valleyside Dr., at W. William Street Successors of the DeVore-Snyder Funeral Home



**Director**  
**Mike Neeper**  
Parishioner

**KE WA PA Sales**  
Since 1958  
78 N. Columbus Street  
740-965-5404  
www.KeWaPa.com

**Amato's Wood Fired Pizza**  
6 S. Sandusky St., Delaware  
740.369.8797  
Dine-In or Carry-Out  
AmatosWoodfiredPizza.com

**CONROY**  
COATINGS & RESTORATION  
PLASTER • STUCCO • BRICK • STONE  
Chris Conroy 740.602.5020  
chris@conroycoatings.com  
2280 Henderson Rd. • Ste. 209 • Columbus



Angel Fox

**FIRESTONE, BREHM,  
WOLF & WHITNEY LLP**  
ESTATE PLANNING, DEFENSE, PROBATE,  
DOMESTIC, PERSONAL INJURY  
740-363-1213 • www.fbylaw.com



Scott Wolf

## Price Realty

Located in Downtown Delaware  
68 North Sandusky Street  
Your Local Full Service  
Real Estate Company  
740-363-9911 www.pricerealty.com

## MILEY MECHANICAL SERVICE

**419-560-9046**  
201 S. Franklin St. Ashley (Right by the Dollar Store)  
We work on all makes and models. Diesels, gas, body work.  
We do all your vehicle needs, from underneath  
to top and everything in between!

**Cashmans**  
www.cashmans.com  
740-363-6073 • 1-800-500-5804

Rubber Mats, Fencing,  
& Horse Equipment  
1646 U.S. Hwy 42 N  
OPEN Mon-Sat., 9-6

**HABITEC**  
SECURITY  
Your Local  
Security  
Solution  
Since 1972  
habitecsecurity.com | 740-362-4698



"No Fatty in the  
Patty"

**740-726-2636**

8 miles north of  
Delaware on 23  
**MomWilsons.com**



Live well as you age.  
**MySourcePoint.org**  
**740-363-6677**



**RE/MAX**  
**Allegiance**

**Stephanie Cashman,**  
Lifetime Parishioner

**740-513-3886**

Your local Realtor, Redefining Real Estate



## PRISM HOME DECOR

Located at Warehouse 61  
61 Flax St. Delaware, Ohio  
Open Sat. & Sun., 9-4  
Flea Market/Antiques/Gifts

**Country Club**  
Rehabilitation Campus  
A Senior Health Care Community

**Michelle Rice, RN**  
Hospital Liaison  
mrice@hollandmgmt.com

Cell: 614-296-5433

countryclubretirementcampus.com  
monarchskilledrehab.com



**JEGS**  
1-800-345-4545 • **JEGS.com**

**Arbors**  
at Delaware  
Rehabilitation VA, Memory & Long-term care  
2270 Warrensburg Rd., Delaware  
arborsatdelaware.com  
740-369-9614



**MASONI-MCQUILLEN**  
INSURANCE AGENCY LLC  
**ALLSTATE**  
INSURANCE AGENCY  
51 N. Sandusky St. Delaware, OH 43015  
740-367-2886 • M-F, 9:00 am-5:30 pm



**OHIO'S PREMIER SHOOTING CENTER**  
Retail- Shooting Ranges  
Training ~ Gunsmithing  
Corporate & Group Events  
3722 Marysville Road | Delaware, OH 43015 | P: (740) 363-7555 | www.blackwingssc.com



Heating and Cooling Company  
**DELAWARE**  
**740-369-4328**  
customairdelaware.com

Is saving money part of your financial plan?  
Call Gina and Nick for a free insurance review!



Count on Appraisal Life, LLC when you need to know the value of  
your property around Delaware County, Ohio

**Chris Majovsky - Parishioner**  
**614-570-7009**

appraisallife@yahoo.com • www.appraisallifellc.com

We're your extended family when family can't be there

614-468-8187  
18 E. Williams St.  
Delaware, OH 43015



Home Care Services • Companion Care  
Personal Care • Alzheimer's & Dementia Care  
Homemaker's Services • Respite Care



jmundwiler@homehelpercare.com  
homehelpershomedcare.com/delaware-oh



**Heating & Cooling**  
Residential/Commercial  
24 Hour Emergency Service

The Leader in Energy Management  
www.comfortxpress.com • (740) 363-6700



**TO ADVERTISE HERE, CONTACT**  
**KATI AT DEE PRINTING**  
**AT 614-777-8700**  
**OR KATI@DEEPRINTING.COM**

**Heartland GIS**  
Proudly Supports the  
St. Mary Bulletin  
Den. Todd Tucky (Owner & Senior Consultant)  
ttucky@heartlandgis.com  
740-707-9029

**Treplus**  
Communities  
Redefining 55+ Living

**BURR OAK**  
**COMMONS**  
**740.370.0802**  
TreplusCommunities.com

**ALTERATIONS,  
SEWING MENDING  
AND REPAIR...**  
Contact Lulu Lashbagh  
at 740-417-4769 or  
lulu\_lassow@yahoo.com



TO ADVERTISE HERE, CALL  
**DEE PRINTING AT**  
**1-800-292-9020**



**TRUCCO**  
EST 1990  
www.truccoconstruction.com



## THE FLYING PIG ALE HOUSE

Breakfast served ALL day!  
BBQ available DAILY starting 11am  
Dining Room & Patio are OPEN or  
Call for you carryout order:

**740-990-0742**

12 S.Sandusky St. Delaware, 43015



Our bulletin is  
printed at  
no cost to the parish.  
Our advertisers cover  
all expenses.  
We thank them and  
encourage you  
to support their  
businesses.

## DICK BAKER ROOFING, INC.

RESIDENTIAL - COMMERCIAL  
• Roof Repairs • Flat Rubber Roofs  
• Continuous Gutters • Shingle Roofs  
• Sheet Metal Contractors • Fully Insured  
614-451-1401  
4730 Kenny Rd. **OVER 55 YEARS OF SERVICE**





**PET HEALTH PLUS  
VETERINARY HOSPITAL**  
Doreen E. Feula, DVM, Parishioner  
4059-D SR 37 East  
**740-369-1922**

**The Hardware Exchange**  
Locally Owned & Operated by  
Keith and LeRoy Anderson  
Parishioners  
Monday-Friday: 7:30a-6p  
Sat.: 7:30a-5p; Sun.: 10a-4p  
141 Sandusky Street  
**740-363-1301**

Are your savings earning what they should?



**Erin Eizensmits, AAMS®**  
Financial Advisor  
9 W North St  
Ostrander, OH 43061  
740-666-5153

Parishioner

**Edward Jones®**  
MAKING SENSE OF INVESTING  
edwardjones.com

**saints**  
auto service

Your neighborhood repair & maintenance facility  
99 E. Central Avenue, Delaware, OH 43015  
**740.363.7100**  
www.saintsautoservice.com

Let us know you are a St. Mary Parishioner for Oil Change Specials  
**Scott & Angela Linnane**  
Parishioner/Owners

**BERNIES**  
Plumbing & Drains



**Bernie Lehman**  
(614) 579-8623  
DISCOUNTS FOR  
SR. CITIZENS/VETERANS/  
MILITARY  
We do it all, from simple water  
closet repairs, sump pumps, hot  
water tanks & anything in between  
OH-000844808 Central Ohio

**H B**  
Harris, Burnett,  
Arend & Schmiesing  
Certified Public Accountants

**614-436-2256** (direct) **614-436-2727** (main)  
7730 Olentangy River Road, Columbus  
andrew@hbastax.com • hbastax.com

**Andrew Arend,**  
CPA & Parishioner

**ERDY EXCAVATION**  
Septics, Footers, Driveways, Ponds, Building Pads,  
Riding Arenas, Trenching

**419-560-5840** Joe Erdy - Parishioner  
Servicing Delaware and surrounding counties

**FOMICH FAMILY  
DENTISTRY, LLC**

**740-362-6381**



New Patients  
Welcomed

Jason A. Fomich, DDS

701 West Central Ave.,  
Delaware, Ohio

DR. FOMICH & FAMILY

**NORTHPOINT**  
FINANCIAL PLANNING  
Retirement Investments 401k IRA

4 West Winter Street • Delaware, OH 43015  
www.northpointfinancialplanning.com

**Paul J. Pfeiffer**

Certified Financial  
Planner™  
**(740) 513-7968**



**Bed & Breakfast style senior living homes**

**614-402-8249**

**Four Star Living**  
Galena Manor 8160 Dustin Rd. Galena  
Ashley Manor 445 Ashley Rd. Westerville  
Westerville Manor 6685 Tussie St. Rd. Westerville  
dfox@fourstarliving.com • www.fourstarliving.com  
Family-owned nursing home alternatives located right in your backyard!

**GSP Gilles Smith Purdum**  
Insurance Agency  
**614.878.0240** Parishioner  
www.gsp-insurance.com • Kim.Gilles@gsp-insurance.com

**Union Electric & Communications LLC**  
Commercial & Design Build  
**740-362-4447** Parishioners  
Ohio Lic. -14317

**The Art of  
Genuine  
MAC WORTHINGTON**  
SCULPTURE PARK & STUDIO  
5935 Houseman Rd • Ostrander  
macworthington.com **614-582-6788**

**DARLA QUAIL**  
REALTOR®  
**COLDWELL BANKER**  
**KING THOMPSON**  
Client care isn't just my commitment,  
it's my culture.  
**614.378.2558**  
darla.quail@kingthompson.com  
darlaquail.cbintouch.com  
Parishioner

**PuroClean™**  
The Paramedics of Property Damage®  
**24/7 Emergency Service**  
Water Fire Mold Biohazard  
**PuroClean Restoration Specialists**  
(740) 369-9500  
(877) 881-9545

**AMANDA PLUMBING**  
SEWER & DRAIN  
**740-369-5161**  
Repair • Remodel  
Residential • Commercial  
Bonded • Registered  
24-hour emergency service guaranteed  
www.amandaplumbing.com  
Insured License #23169

**GOSSING CONSTRUCTION**  
Building & Remodeling Since 1978  
35A S. Galena Road, Sunbury, OH  
**740-965-0822**  
gossingconstruction.com

**St. GABRIEL CATHOLIC RADIO**  
**AM 820**

**CENTRAL OHIO GERIATRICS**  
110 DELAWARE CROSSING WEST, SUITE A  
CALL FOR AN APPOINTMENT AT  
(740) 201-1845  
Dr. Peter Hucek is accepting new patients, over the  
age of 50, at our newest medical office Willow Brook  
Delaware Run, Outpatient Primary Care Geriatrics

**DOBRANSKY WEALTH MANAGEMENT**  
Hilltop Securities Independent Network Inc.  
470 Olde Worthington Rd., Suite 200  
Westerville, OH 43082  
direct 614.410.6675  
mobile 330.519.4186  
Vincent.Dobransky@HilltopNetwork.com  
Offering general securities through Hilltop Securities Independent Network Inc.  
1201 Elm St., Suite 3500, Dallas, Texas 75270 | 800.562.8041 | Member: FINRA/SIPC

**Knights of Columbus INSURANCE**  
YOUR SHIELD FOR LIFE  
Mark Hedge, FICF, Field Agent  
740-599-2963 • mark.hedge@kcof.org  
• Life Insurance • Disability Income Insurance  
• Long-Term Care Insurance • Retirement Annuities  
Protecting Catholic families since 1882

**EMERGENCY PLUMBING SERVICE**  
**740-548-5453**  
Residential • Commercial  
Industrial  
Non-Emergency & 24-Hr Emergency  
**SAVE \$20 OFF ANY REGULAR SERVICE**  
Mention Code SMC2020  
When Calling for Appointment  
Voted Delaware County's #1 Plumber for 10 Years  
by the Readers of the Delaware Gazette  
Lic. # 32020  
www.EmergencyPlumbingService.com

**WANNER METALWORK**  
(740) 369-4034  
www.wannermetalworkx.com  
Fall in love with your yard again...  
Be Mosquito Free!  
**MOSQUITO AUTHORITY**  
No Mosquitoes, GUARANTEED.  
» 614.321.2524 » BugsBITE.com

**Gibson the Florist**  
**740-363-1394**  
19 W. Winter St.,  
Delaware  
Flowers & Gifts  
For Every Occasion

**FAITH COMMUNITY EXCELLENCE**  
**BISHOP WATTERSON**  
BISHOPWATTERSON.COM

**SERVPRO®**  
Fire & Water - Cleanup & Restoration™  
SERVPRO® of Delaware, OH  
**740-369-5020**  
Independently Owned & Operated

**Join Catholic Men Who Serve**  
**KNIGHTS OF COLUMBUS**  
www.KofC1056.org

**Ohio Living**  
Sarah Moore  
Assisted Living | Rehabilitation  
Long-Term Nursing Care  
**740.362.9641 | ohioliving.org**

**Ryan Reynolds**  
Team, LLC  
**kw CONSULTANTS**  
KELLER WILLIAMS REALTY  
**(614) 726-6971**  
www.RyanHelpsU.com  
Ryan Reynolds Parishioner  
Helping You is What We're Here to do!

**OAKSIDE ANIMAL CLINIC**  
111 Valleyside Dr., Delaware  
**740-362-8387 • www.oaksideanimalclinic.com**  
Dr. Thomas B. Garey • Dr. Elizabeth Dible  
Dr. Annie Segner • Dr. Melissa Glick  
**Fidelity Federal**  
SAVINGS AND LOAN ASSOCIATION  
Fidic Serving central Ohio since 1887  
Main Office 60 North Sandusky Street  
**740-363-1284**  
Westfield Branch 1940 St. Rt. 37 W.  
**740-363-1233**  
www.fidfedsl.com

**CENTRAL MARKETING ASSOCIATES INC.**

**Brokers of Fresh Fruits and Vegetables Since 1908**  
222 E Williams St., Delaware  
**740-363-1126**  
Dinovo Family celebrating 100 years of parish membership in 2013

Please Patronize Our Advertisers - To Place An Ad Call 1-800-292-9020